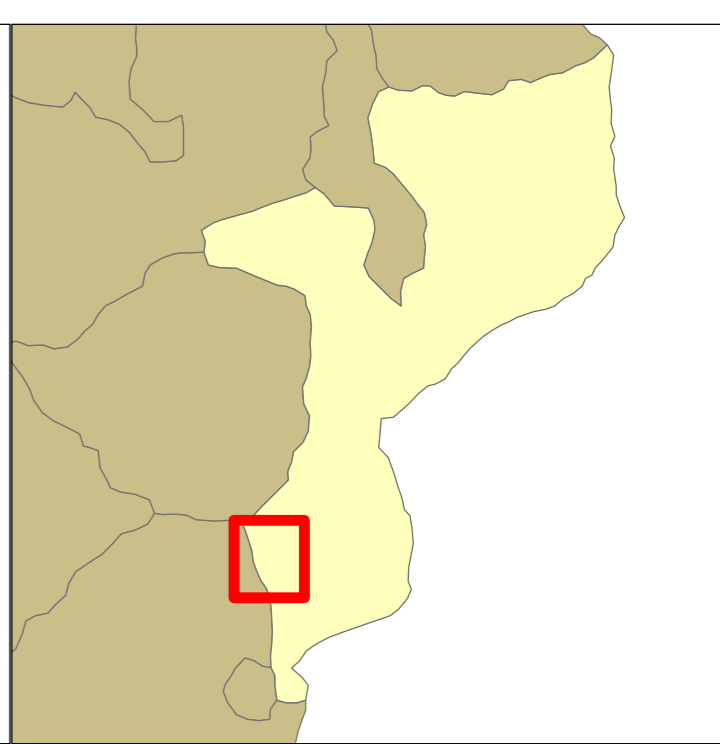


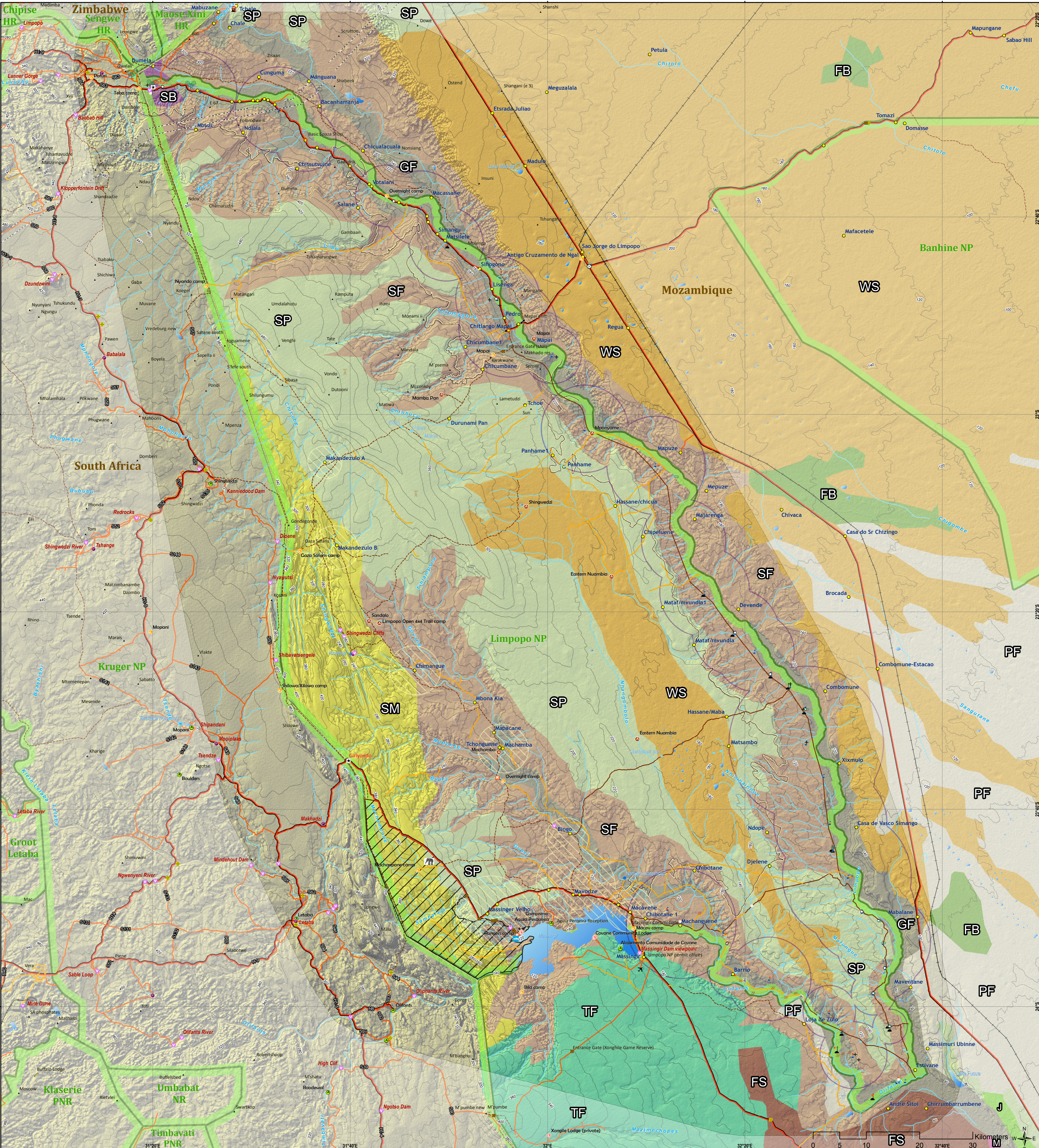
Limpopo National Park

Mozambique

1:335,000



MAP 1: Topography MAP 2: Geology MAP 3: Soil MAP 4: Vegetation MAP 5: Land Facets MAP 6: Land Cover



- Airport
- Airstrip
- Boat launch
- Border post
- Bridge
- Entrance gate
- Ferry/ponoon
- Pump station
- Railway crossing
- Shop/Market
- Boma
- Low water crossing point
- Soccer field
- Sacred site
- Game Hide
- Picnic site
- Ranger camp
- Viewpoint
- 4x4 camp
- Camp
- Lodge
- Rest camp
- Chief homestead
- Clinic
- School
- Cemetery
- Church
- Community headquarters
- Populated place
- Trig beacon
- Tower
- Repeater
- Proposed Towers
- Fever tree forest
- Water Body
- Waterhole
- Fountain
- Rivers
- Protected Areas
- Livestock
- Sanctuary Area
- Community Use Radius
- Community Resource Zone

- Railway
- Main road
- District
- 4x4
- Other road
- Off road track
- Mgt Track
- Power Lines
- Country borders

- Vegetation**
- Gallery forest and forest
 - Medium shrub forest
 - Open forest or jungle
 - Open forest or savanna arb'
 - Open prairie and forest
 - Open woods or shrublands
 - Prairie and forest brenthosa
 - Savana arborea ou matagalai a
 - Savana arborea, brenha prad
 - Traces of the forest press
 - savannah or prairie

Copyright: Peace Parks Foundation. All Rights Reserved. No Part of this map/publication may be reproduced, stored in a retrieval system or transmitted in any form or by any means without the written permission from the Copyright owner.

Disclaimer: Although the utmost care has been taken in the production of this map, neither Peace Parks Foundation nor its staff can be held responsible for any loss, damage or any other liability resulting from the use of this map.

Peace Parks Foundation GIS
© Peace Parks Foundation 2009
Millennia Park, 16 Stellenbosch 7613
South Africa
Tel: +27 (0)21 887 6188
Fax: +27 (0)21 887 6189
e-mail: parks@ppf.org.za

Data Source:
Vegetation: Unknown
Roads: Tracks4Africa & GPS
www.tracks4africa.com



Ref: gftp_InsSeriesVeg_a1_nm
Date: 30 March 2009