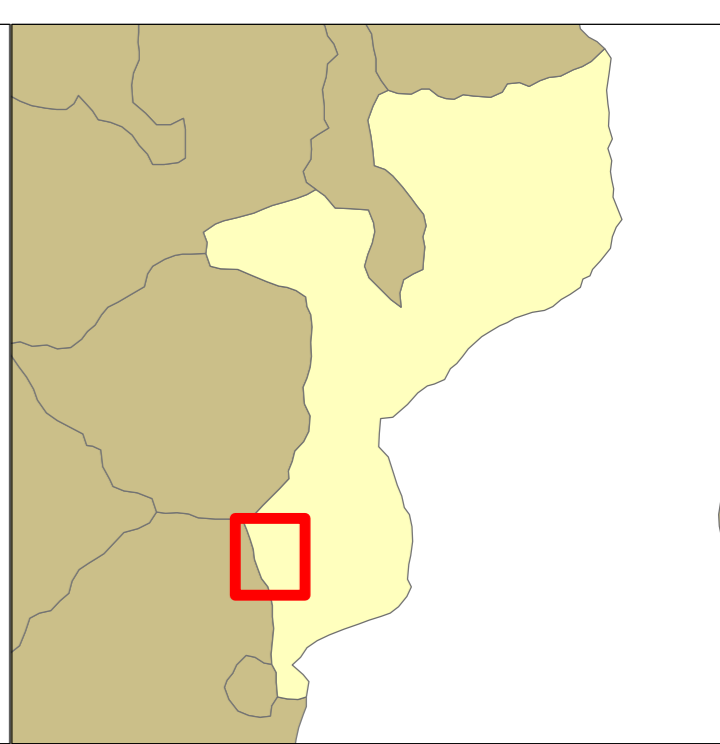


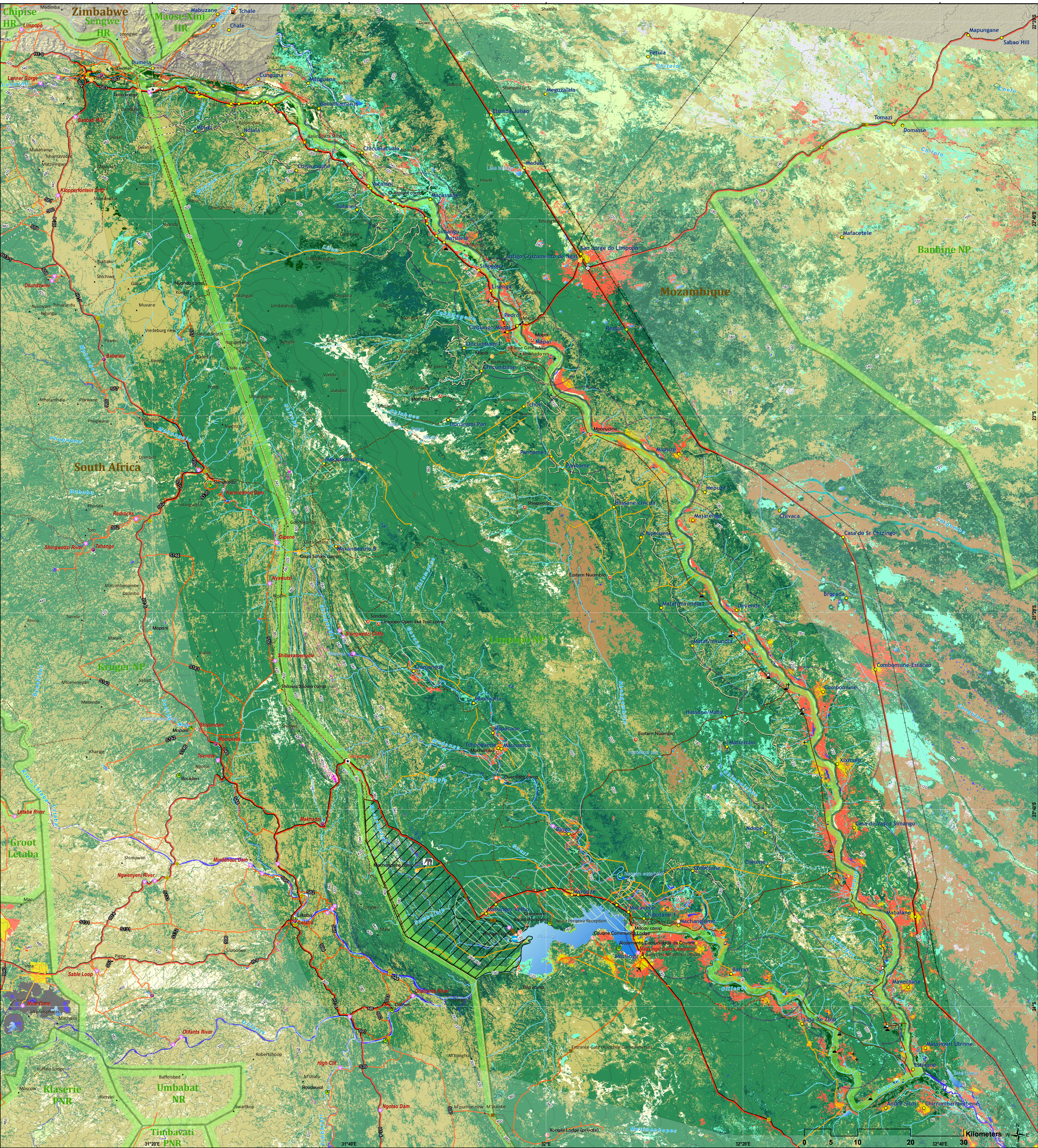
Limpopo National Park

Mozambique

1:335,000



MAP 1: Topography MAP 2: Geology MAP 3: Soil MAP 4: Vegetation MAP 5: Land Facets MAP 6: Land Cover



✈ Airport	📍 Game Hide	📍 Trig beacon	🚞 Railway	🌊 Land Cover	🌳 cc bushland & thicket
🛥 Airstrip	📍 Picnic site	📍 Tower	🛣 Main road	💧 water1	🌳 open woodland / bushland
🚤 Boat launch	📍 Ranger camp	📍 Repeater	🛣 District	💧 water2	🌳 2nd forest / cleared
🚧 Border post	📍 Viewpoint	📍 Proposed Towers	🛣 4x4	💧 water3	🌳 open-sparse bushland
🚪 Entrance gate	📍 4x4 camp	📍 Fever tree forest	🛣 Other road	💧 water4	🌳 grasslands / open
🚢 Ferry/pontoon	📍 Camp	📍 Water body	🛣 Off road track	🌳 wetland seepage / pan	🌳 wet-bare
🚰 Pump station	📍 Lodge	📍 Waterhole	🛣 Mgt Track	🌳 cc woodland	🌳 non-wet bare
🚶 Railway crossing	📍 Rest camp	📍 Fountain	🛣 Power Lines	🌳 tall cc forest	🌳 cc bushland & thicket (seasonal)
🛍 Shop/Market	📍 Chief homestead	📍 Rivers	🛣 Country borders	🌳 dryland / subs cultivation	🌳 plantations (clearfelled)
🏠 Boma	📍 Clinic	📍 Protected Areas		🌳 comm cultivation incl irrig	🌳 mines
🚶 Low water crossing point	📍 Cemetery	📍 Livestock		🌳 plantations	🌳 sparse grasslands / open
⚽ Soccer field	📍 Church	📍 Sanctuary Area		🌳 urban / settlement	🌳 nat bare rock
⛔ Sacred site	📍 Community headquarters	📍 Community Use Radius		🌳 golf course	
	📍 Populated place	📍 Community Resource Zone			

Copyright: Peace Parks Foundation. All Rights Reserved. No Part of this map/publication may be reproduced, stored in a retrieval system or transmitted in any form or by any means without the written permission of the Copyright owner.

Disclaimer: Although the utmost care has been taken in the production of this map, neither Peace Parks Foundation nor its staff can be held responsible for any loss, damage or any other liability resulting from the use of this map.

Peace Parks Foundation GIS
© Peace Parks Foundation 2009
Millennia Park, 16 Stellentia Ave
Die Boord Stellenbosch 7613
South Africa
Tel: +27 (0)21 887 6188
Fax: +27 (0)21 887 6189
e-mail: parks@ppf.org.za

Data Sources:
Land Cover: GeoTerralimage (2007)
Roads: Tracks4Africa & GPS
WWW.TRACKS4AFRICA.COM



Ref: gftp_InsSeriesLandCover_at_1.m
Date: 30 March 2009