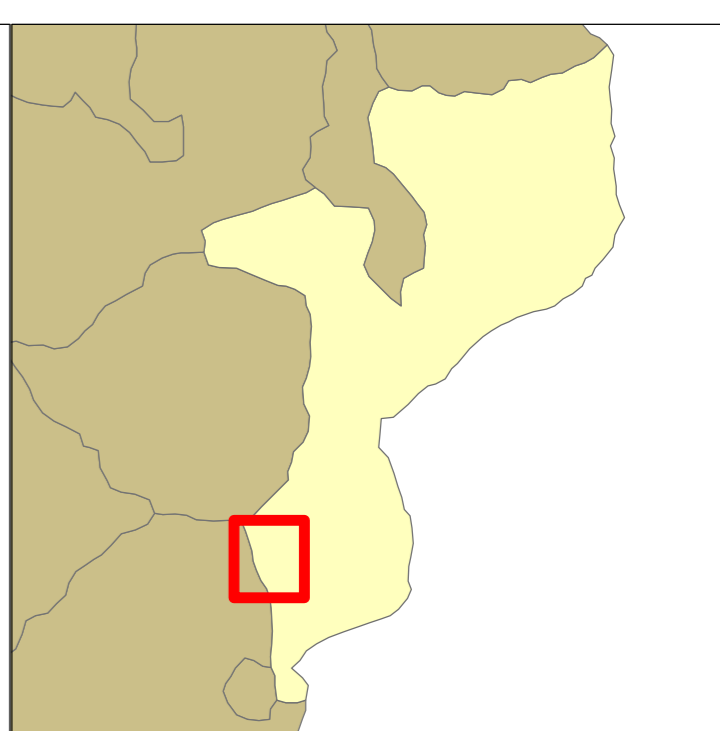


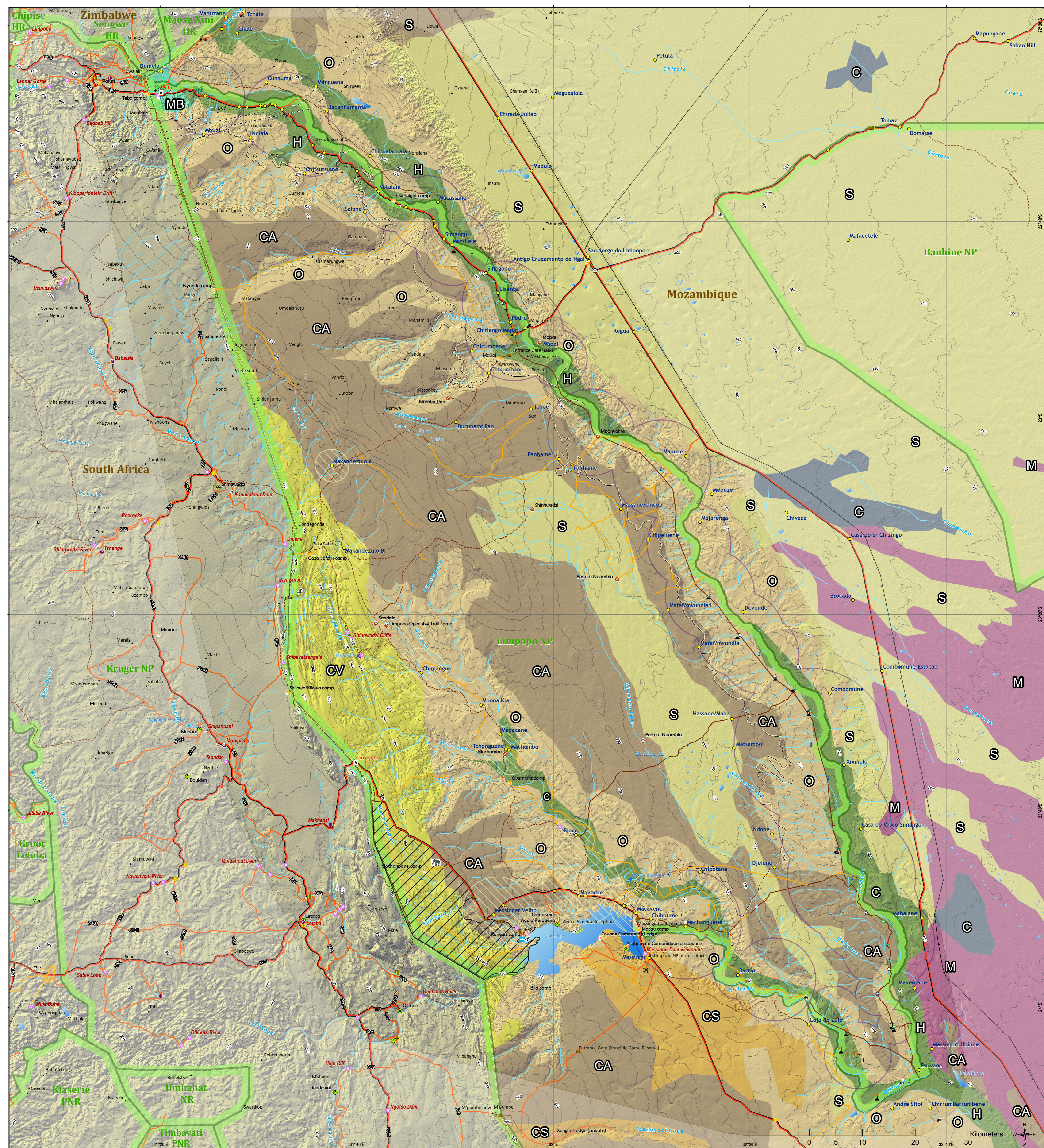
Limpopo National Park

Mozambique

1:335,000



MAP 1: Topography MAP 2: Geology MAP 3: Soil MAP 4: Vegetation MAP 5: Land Facets MAP 6: Land Cover



<ul style="list-style-type: none"> Airport Airstrip Boat launch Border post Bridge Entrance gate Ferry/pontoon Pump station Railway crossing Shop/Market Boma Low water crossing point Soccer field Sacred site 	<ul style="list-style-type: none"> Game Hide Picnic site Ranger camp Viewpoint 4x4 camp Camp Lodge Rest camp Chief homestead Clinic Shop/Market Cemetery Church Community headquarters Populated place 	<ul style="list-style-type: none"> Trig beacon Tower Repeater Proposed Towers Fever tree forest Water Body Waterhole Fountain Rivers Protected Areas Livestock Sanctuary Area Community Use Radius Community Resource Zone 	<ul style="list-style-type: none"> Main road District 4x4 Other road Off road track Mgt Track Power Lines Country borders 	<ul style="list-style-type: none"> Geology CV Chain of vulcanica Libombos CA Coluvioles from mananga CS Coverage arenaceous sand eolico CS Coverage of sand eolico CS Holocene alluvium CS Mantle basaltic over soc CS Outcrops of sedimentary rocks S Sediments of mananga
---	---	--	---	--

Copyright: Peace Parks Foundation. All Rights Reserved. No Part of this map/publication may be reproduced, stored in a retrieval system or transmitted in any form or by any means without the written permission of the Copyright owner.

Disclaimer: Although the utmost care has been taken in the production of this map, neither Peace Parks Foundation nor its staff can be held responsible for any loss, damage or any other liability resulting from the use of this map.

Peace Parks Foundation GIS
© Peace Parks Foundation 2009
Millennia Park, 16 Stellenia Ave
Die Boord Stellenbosch 7613
South Africa
Tel: +27 (0)21 887 6188
Fax: +27 (0)21 887 6189
e-mail: parks@ppf.org.za

Data Source:
Geology: Unknown
Roads: Tracks4Africa & GPS
WWW.TRACKS4AFRICA.COM

Ref: gtp_InpSeriesGeology_a1_nm
Date: 30 March 2009